

Welcome to your KIMBERLY-CLARK PROFESSIONAL* Product Certificate Resource Site!

KIMBERLY-CLARK PROFESSIONAL* has launched a NEW online certificate retrieval tool where you can access product certificates on our Scientific products. No more wasted time searching to find the certificates you need.. this tool is fast and efficient!

How do I get there?

<http://www.kimtech.com/certificates>

How do I locate a certificate?

The easiest way to find what you need is to follow these simple instructions:

1. Choose your Product Category: Masks, Gloves, Apparel or Wipers
2. Enter Your Lot or Certificate Number from the Product Label located on the outside of the product case and click "Submit"
3. Your results will display under "Your Search Results"

If you have trouble locating your lot or batch number, click on "Where is my lot or certificate number?" (To increase the number of results that you see, enter any four sequential digits from the lot or certificate number).

What certificates are included?

- Certificate of Irradiation
- Certificate of Analysis
- Certificate of Conformance

There are also additional resources and links available on the site for the following:

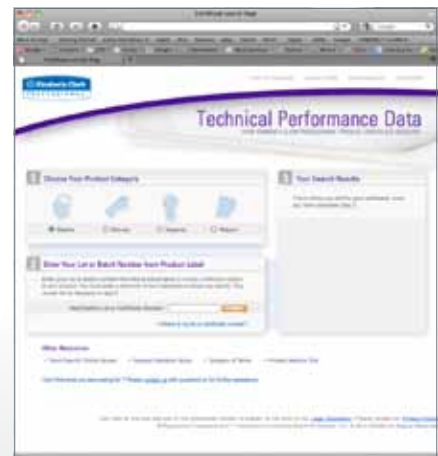
- Trend Data for Critical Gloves
- Request Validation Study
- Glossary of Terms
- Product Selector Tool

Are there certain computer requirements needed?

- A high speed internet connection is recommended (DSL, Cable, T1, T3, etc.)
- Disable any popup blockers before use. Some functionality within the site is provided via popup windows.
- PC users will need Internet Explorer to access the site while Macintosh users need Netscape

This new certificate database offers many benefits including:

- No login ID or password needed to access
- Fast, flexible, reliable searching
- Easy to use: 1-2-3 Steps



Try it Today!

www.kimtech.com/certificates

It's easy to use, accurate and should be the only place you go when you need to retrieve product certification from KIMBERLY-CLARK PROFESSIONAL*!